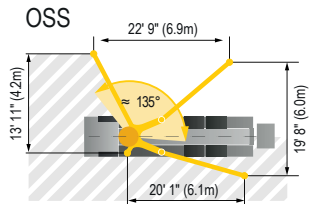
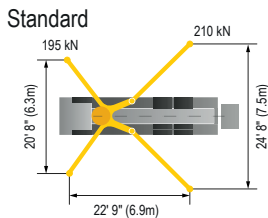
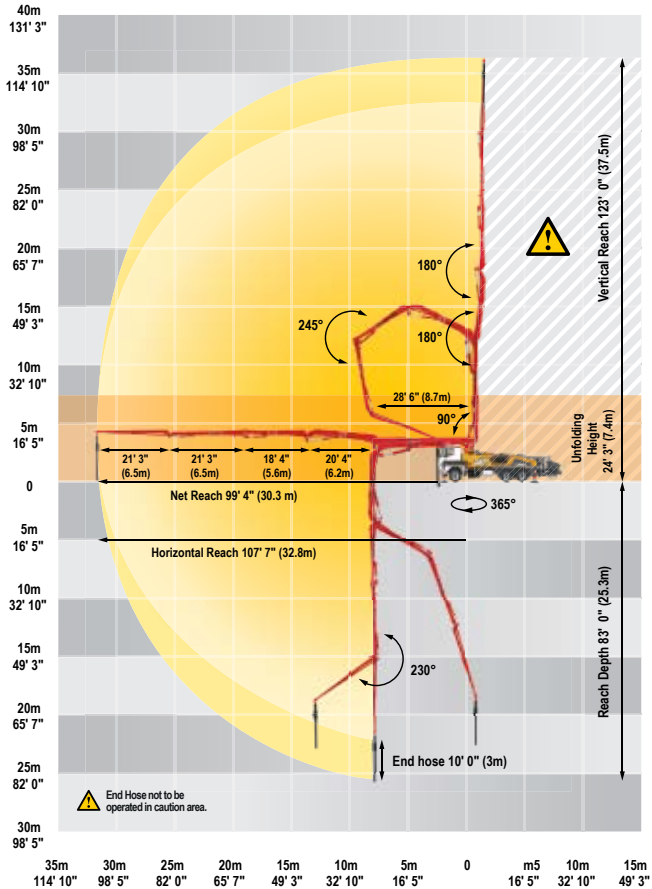


38Z-5-Meter Range Diagram



38Z-5-Meter Truck-Mounted Specifications

Length	35' 6"	(10.84m)
Width	8' 2"	(2.50m)
Height	12' 9"	(3.89m)
Wheelbase	223"	(5664mm)
Front axle weight	18,880 lbs	(8,564kg)
Rear axle weight	37,540 lbs	(17,540kg)
Approx total weight	56,420 lbs	(25,592kg)

Based on Model MACK Terrapro 613 with .16H pump cell.

Weights are approximate and include pump, boom, truck, driver and full fuel tank.

Varies with options selected.

Dimensions will vary with different truck makes, models and specifications.

Boom Specifications | Z-Fold Design

Height & Reach

Vertical reach	123' 0"	(37.50m)
Horizontal reach	107' 7"	(32.80m)
Reach from front of truck*	99' 4"	(30.30m)
Reach depth	83' 0"	(25.30m)
Unfolding height	24' 3"	(7.40m)

5-Section Boom

1st section articulation	90°	
2nd section articulation	180°	
3rd section articulation	180°	
4th section articulation	245°	
5th section articulation	230°	
1st section length	28' 6"	(8.70m)
2nd section length	20' 4"	(6.20m)
3rd section length	18' 4"	(5.60m)
4th section length	21' 3"	(6.50m)
5th section length	21' 3"	(6.50m)

General Specifications

Pipeline Size (ID) metric ends	5"	(125mm)
Rotation	365°	
End hose — length	10' 0"	(3.00m)
End hose — diameter	5"	(125mm)
Outrigger spread L-R — front	19' 8"	(6.00m)
Outrigger spread L-R — rear	24' 7"	(8.10m)
	hydraulically extended out & down	
	hydraulically swing out & extend down	

Pump Specifications

	38Z-5.16H	38Z-5.18H LS
Output — rod side	209 yd ³ /hr (160m ³ /hr)	—
— piston side	141 yd ³ /hr (108m ³ /hr)	238 yd ³ /hr (182m ³ /hr)
Pressure — rod side	1233 psi (85 bar)	—
— piston side	1885 psi (130 bar)*	1233 psi (85 bar)*
Material cylinder diameter	9" (230mm)	10" (250mm)
Stroke length	83" (2100mm)	83" (2100mm)
Maximum strokes per minute		
— rod side	31	—
— piston side	21	29
Volume control	0-Full	0-Full
Vibrator	Standard	Standard
Hard-chromed material cylinders	Standard	Standard
Hydraulic system	Free Flow	Free Flow
Hydraulic system pressure	5075 psi (350 bar)	5075 psi (350 bar)
Differential cylinder diameter	5.5" (140mm)	4.9" (140mm)
Rod diameter	3.1" (80mm)	3.1" (80mm)
Maximum size aggregate	2.5" (63mm)	2.5" (63mm)
Water tank - pedestal	185 gal (700L)	185 gal (700L)

Maximum theoretical values listed

* Applies to units mounted on PMA stock truck — MACK Terrapro 613

• Standard delivery line system rated at max line pressure of 1,233 psi (85 bar)