

63Z-Meter Truck-Mounted Specifications

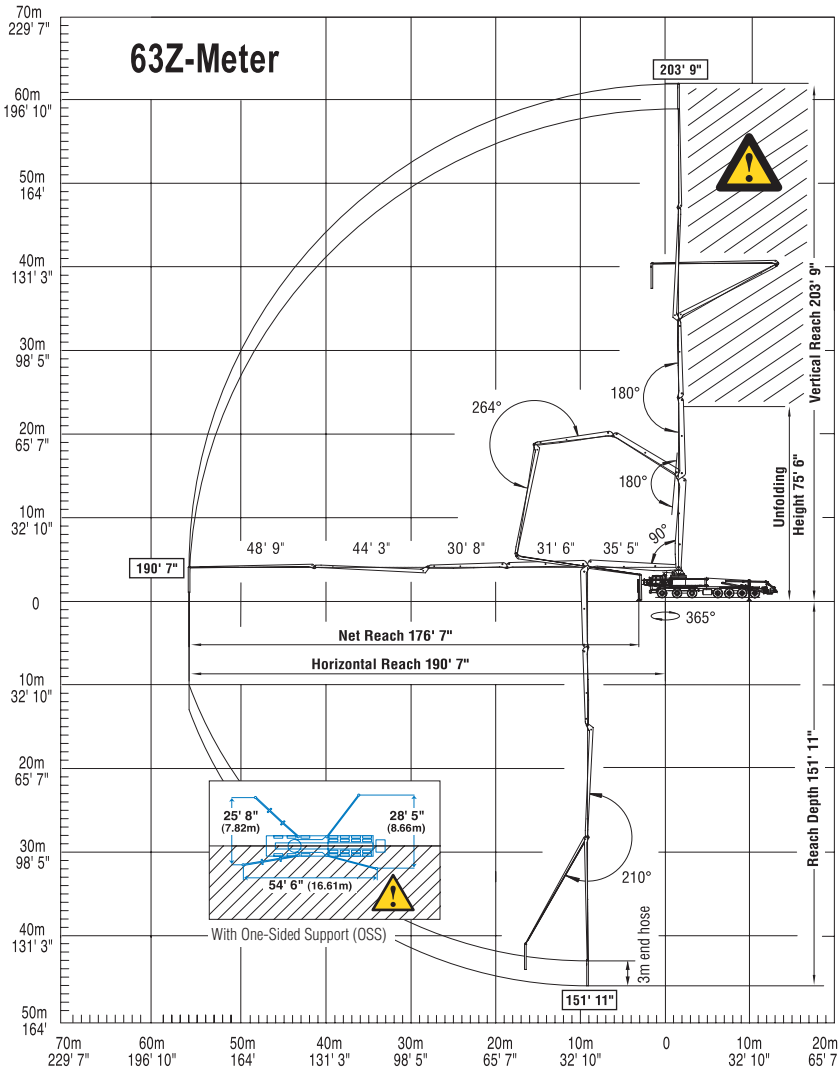
Based on Model MACK MRU 688S with .16H pump cell

Length	54' 1"	(16.48m)
Width	8' 2"	(2.50m)
Height	12' 10"	(3.91m)
Wheelbase	280"	(7,112mm)
Front axle weight	54,880 lbs	(24,893kg)
Rear axle weight	74,300 lbs	(33,702kg)
Approx. total weight	129,180 lbs	(58,595kg)

Weights are approximate and include pump, boom, truck, full hydraulic oil, driver and some fuel. Varies with options selected.

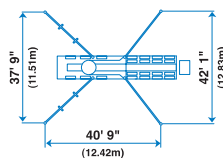
Dimensions will vary with different truck makes, models and specifications.

Range Diagram



End hose not to be operated in caution area.

Photos and drawings are for illustrative purposes only. For available options, please refer to price list.



Authorized Distributor

Boom Specifications • Z-Fold Design

Height & Reach		
Vertical reach	203' 9"	(62.10m)
Horizontal reach	190' 7"	(58.09m)
Reach from front of truck*	176' 7"	(53.82m)
Reach depth	151' 11"	(46.30m)
Unfolding height	75' 6"	(23.01m)

5-Section Boom

1st section articulation	90°	
2nd section articulation	180°	
3rd section articulation	180°	
4th section articulation	264°	
5th section articulation	210°	
1st section length	35' 5"	(10.80m)
2nd section length	31' 6"	(9.60m)
3rd section length	30' 8"	(9.35m)
4th section length	44' 3"	(13.49m)
5th section length	48' 9"	(14.86m)

General Specs

Pipeline size (ID) metric ends —		
A & B sections	5"	(125mm)
C, D & E sections	4.4"	(112mm)
Rotation	365°	
End hose — length (lightweight)	10'	(3m)
End hose — diameter	4.5"	(115mm)
Outrigger spread L - R — front swing out, telescope & extend down	37' 9"	(11.51m)
Outrigger spread L - R — rear swing out & extend down	42' 1"	(12.83m)

Pump Specifications 63Z.16H 63Z.20H

Output — rod side	210 yd ³ /hr (160m ³ /hr)	—
piston side	146 yd ³ /hr (112m ³ /hr)	260 yd ³ /hr (200m ³ /hr)
Pressure — rod side	1233 psi (85 bar)	—
piston side	1885 psi (130 bar) •	1233 psi (85 bar)
Material cylinder diameter	9" (230mm)	11" (280mm)
Stroke length	83" (2100mm)	83" (2100mm)
Max strokes per minute — rod side	31	—
piston side	21	26
Volume control	0-Full	0-Full
Vibrator	Standard	Standard
Hard-chromed material cylinders	Standard	Standard
Hydraulic system	Free Flow	Free Flow
Hydraulic system pressure	5075 psi (350 bar)	5075 psi (350 bar)
Differential cylinder diameter	5.5" (140mm)	5.5" (140mm)
Rod diameter	3.1" (80mm)	3.1" (80mm)
Maximum size aggregate	2.5" (63mm)	2.5" (63mm)
Water tank — outrigger	264 gal (1000L)	264 gal (1000L)

Maximum theoretical values listed.

* Applies to units mounted on PMA stock truck — MACK MRU 688S

• Standard delivery line system rated at max line pressure of 1233 psi (85 bar)



Putzmeister America, Inc.
1733 90th Street
Sturtevant, WI 53177 USA
Telephone (262) 886-3200
(800) 884-7210
Facsimile (262) 884-6338
www.putzmeister.com

