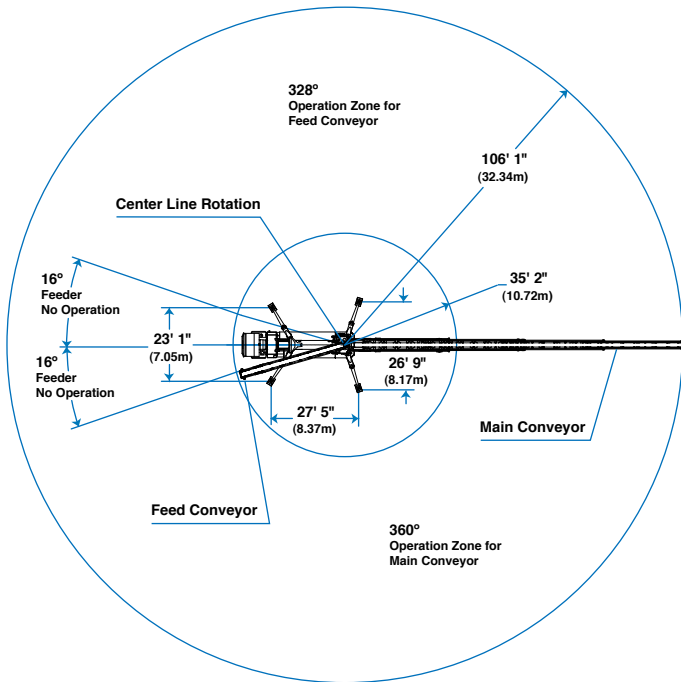
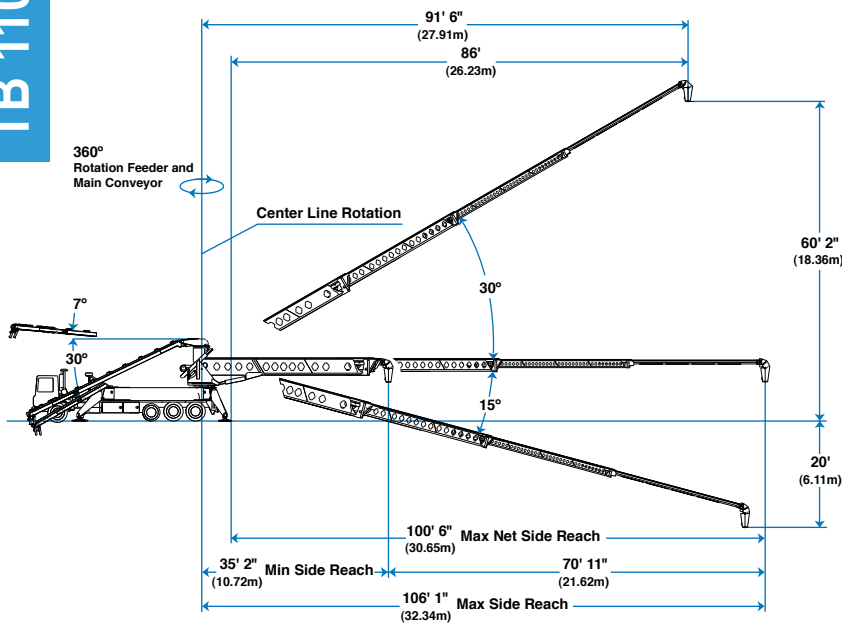
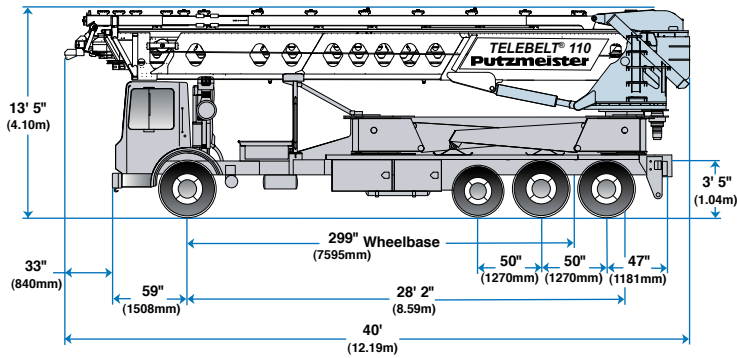


TB 110



Photos and drawings are for illustrative purposes only.

Conveyors

Conveyor horizontal reach —		
Maximum at 0°	106' 1"	(32.34m)
Maximum at 30°	91' 6"	(27.91m)
Conveyor belt width	18"	(457mm)
Feed conveyor length	38'	(11.60m)
Feed conveyor belt width	18"	(457mm)
Trunk/end hose length	15'	(4.57m)
Discharge height from grade —		
Maximum at 30°	60' 2"	(18.36m)
Maximum at -15°	-20'	(-6.11m)
Calculated rated capacity at 0°	6 yd ³ /min	(4.60m ³ /min)
main & feed conveyors	360 yd ³ /hr	(275m ³ /hr)
Calculated rated capacity up to 20°	3.80 yd ³ /min	(2.90m ³ /min)
main & feed conveyors	230 yd ³ /hr	(175m ³ /hr)
Observed capacity	4.58 yd ³ /min	(3.50m ³ /min)
main & feed conveyors	275 yd ³ /hr	(210m ³ /hr)

Outriggers

Net reach beyond outriggers —		
at 0°	100' 6"	(30.65m)
at 30°	86'	(26.23m)
Outrigger spread L - R — front swing out hydraulic up/down	23' 1"	(7.05m)
Outrigger spread L - R — rear swing out hydraulic up/down	26' 9"	(8.17m)

General Specifications

Water tank capacity	200 gal	(757L)
Hydraulic oil tank capacity with cooler	150 gal	(568L)

Truck Specifications**

Weight	20,525 lbs	(9,310kg)
Engine horsepower	405 hp	(302kW)
Wheelbase	299"	(7,595mm)
Cab height	104"	(2,642mm)
Steering radius (outside)	45' 6"	(13.87m)
Steering angle	30°	
Fuel tank capacity	80 gal	(303L)
Transmission	Mack T310 10-Speed	

Transport Axle Weights**

Steering	19,365 lbs	(8,784kg)
Pusher	11,000 lbs	(4,989kg)
Tandem	31,438 lbs	(14,260kg)
Total	61,803 lbs	(28,034kg)

Maximum theoretical values listed.
 * Truck dimensions will vary with different truck makes, models and specifications.
 * Weights are approximate and include driver, conveyor truck, full hydraulic oil, full fuel and full water.
 * All specifications apply to units mounted on Mack MRU 613.

Putzmeister

Putzmeister America, Inc. Telephone (262) 886-3200
 1733 90th Street (800) 884-7210
 Sturtevant, WI 53177 USA Facsimile (262) 884-6338
 Telebelt@putzam.com
 www.putzmeister.com



Authorized Distributor